

Monument
Lighthouse
Charter School

The Beacon

Volume 1 Issue 2

September 2,
2011



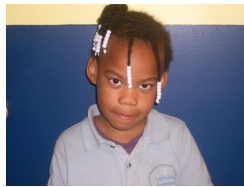
Monument Lighthouse
Charter School
4002 N. Franklin Rd.
Indianapolis, IN 46226
(317)-897-2472
Mrs. Jamie Brady,
Principal

**“Whoever I
am, or what-
ever I am do-
ing, some kind
of excellence
is within my
reach.” John
Gardner**

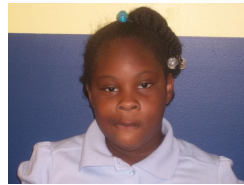


MLCS Blogspot: What Do Scholars Love About MLCS?

By Airron Green



Yasmique Porter from Miss Kirkland's Kindergarten says, "I love my class, recess, math, centers, and learning letters."



Darionna Thomas from Miss. Miranda's 1st grade class states, "I love the teachers, lunch, gym, and computer time."



Keyara Wilson from Miss. Heaton's 2nd grade class proclaims, "I love town hall, teachers, recess and lunch."



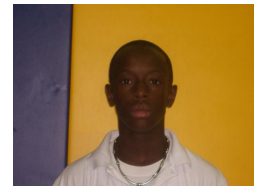
Joseph Rodriguez from Miss. Kline's 3rd grade class says, "I love learning, reading, math, and writing."



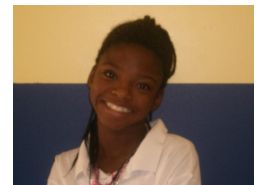
Jameese Jones from Mrs. Cooper's 4th grade class exclaims, "I love the teachers because they help me get to college. I also love recess and eating healthy."



DaRon Alexander from Mrs. Black's 5th grade class states, "I love gym, teachers, lunch, and school."



Adrian Powell from Ms. Woods's 6th grade class says, "I love gym, math, science, and music."



Anasja Williams from Mrs. Bush's 7th grade class states, "I love friends, special areas, teachers, and lunch. Our school is the best for your child. Your child can gain more than enough knowledge for college. At our school we can see their future."

Mrs. Evans Highlights Community Events

By Teriyana Shelton

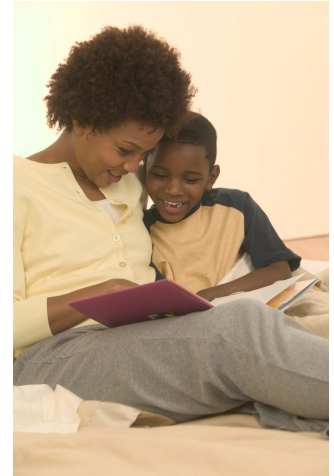
Mrs. Evans is the family coordinator and she handles enrollment for the school. She also plans monthly school wide events in which families come together for a fun, educational experience! One responsibility that she has is to build network relationships between our school and its community partners! Another thing she does is facilitate

parent meetings. "These meetings allow parents the opportunity to voice their concerns, share ideas, and receive information on future school endeavors," says Mrs. Evans.

There is an upcoming event at MLCS on September 15, 2011. This event is entitled "Fall Into Books."

Mrs. Evans exclaims, "Each student will receive a FREE

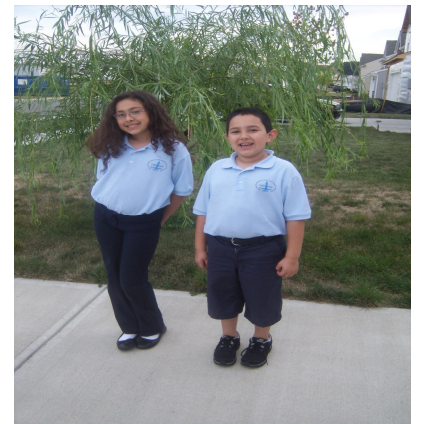
book and a mystery guest will be sharing a story! Hope to see all MLCS families there!"



UniforMania!

While scholars may complain about uniforms, the MLCS community encourages parents to have positive conversations with scholars about appearance, professionalism, and training scholars for the future. Wearing a uniform or dress code is not optional in the professional post-collegiate world. Please review the LHA policies on uniform in the student handbook. Scholars in lower academy wear light blue polos,

whereas scholars in upper academy must wear white polos. Bottoms are always navy blue with a black belt if loops are present. Undershirts must always be white with no coloring or graphics showing through. Socks can be white, black, navy blue, or brown. Shoes are always black. Leggings, tights, or pantyhose worn by our young ladies must always be navy blue. At the present time, youth light blue polos are available.



Get Involved!

By Nachele Jackson

One way scholars can get involved in community service is to help out the elderly in their neighborhoods. There are voluntary and mandatory changes that keep neighborhoods safe and clean. Community service is important because there is always

something that one could do to better one's community. Some examples of community service include collecting trash, volunteering at a funeral home, and mowing a lawn for a single parent or a church. All scholars have to do to be good community stewards is ask neighbors what is needed.



About DSC, Mr. Jefferson

By Kyren Gaddie

The Director of School Culture (DSC) is Mr. Jefferson. Mr. Jefferson takes pride in knowing how to plan and achieve the cultural goals of the school. I asked Mr. Jefferson about how to improve school culture and he said, "I always make myself available to scholars, parents, and teachers." Mr. Jefferson advises, "Listen to what students have to say, and be honest with students and parents. Always respect the student's voice."

Mr. Jefferson's role is to help sustain positive school culture. Mr. Jefferson states, "I help it by being constant and firm. The students need to follow school rules."

Mr. Jefferson is good at building relationships and bridges between parents, teachers, scholars, and school leadership. As an ex-Indianapolis Colt defensive player, he understands what teamwork means and strives to take the same approach with the school community.



Let's Get Physical!

By Stephanie Diaz-Munoz and Andrea Martin

Mr. Petroff is the gym teacher at MLCS. Mr. Petroff says sports had a big impact on his life growing up. He decided that he wanted to be a teacher. He believes high con-

sumption of fruits and vegetables are healthier for all people. And, that junk food is not the best decision to make. He says we should drink eight glasses of water per day. Children should exercise six days a week for at least an hour per

day. If children are active during their adolescent lives, they will be active as adults. Mr. Petroff believes there is not a particular diet one has to be on, just eat more fruits and vegetables, exercise more, and drink water..



And as we let our own light shine, we unconsciously give other people permission to do the same.+ Nelson Mandela





Club Director: Mrs. Maldonado
 Club Journalists: Nachele Jackson,
 Kyren Gaddie, Stephanie Diaz-Munoz,
 Andrea Martin, Airon Green, Teriyana
 Shelton

Monument Lighthouse Charter School
 4002 N. Franklin Rd.
 Indianapolis IN 46226
 (317) 897-2472

**MLCS Scholars are
 #1**

MLCS is an "Exemplary School" as
 recognized by the Indiana Department
 of Education!

www.lighthouse-academies.org

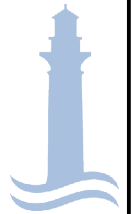
History and Vision

History

Lighthouse Academies was founded in November 2003 by our current President and CEO, Michael Ronan. Our first school, Bronx Lighthouse Charter School, opened its doors in September 2004 to 128 students. In the first five years, LHA has developed, opened and is operating public charter schools in four states and the District of Columbia. Since our inception, Lighthouse Academies has been supported by generous grants from the Doris and Donald Fisher Fund, New Schools Venture Fund (NSVF) and the Walton Family Foundation. Lighthouse Academies is a member of the NSVF Community of Practice, sharing our experiences with other education entrepreneurs who share our passion and mission.

Why "Lighthouse"?

The Lighthouse is a symbol of hope and security. Our mission gives hope to parents for a brighter future for their children. Our vision extends the hope and security into the future.



Your MLCS Journalists

Top from left:

Andrea Martin, Stephanie Diaz-Muñoz, Teriyanna Shelton, Nachele Jackson

Bottom from left: Airon Green, Kyren Gaddie

