

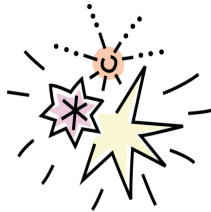


MONUMENT LIGHTHOUSE CHARTER SCHOOL

4002 North Franklin Road. Indianapolis, Indiana 46226

PH: 317.897.2472 or www.lighthouse-academies.org

August 19th, 2011



ARRIVAL & DISMISSAL TIMES!

In the past few weeks of school, we have had several students dropped off early and/ or picked up late continuously. Please note that students may be dropped off no earlier than 7:45 am. Dismissal begins at 3:50 pm daily and students must be picked up no later than 4:00 pm. Students here after 4:00 pm will be sent to the YMCA after care program and subject to any fees that they may charge.

Additionally, we have had several students that have been tardy. Class begins promptly at 8:00 am. In order for scholars to maximize their potential for learning, it is essential that they be here at the beginning of the school day. Please help us make this the best possible learning experience for your child and help them learn timely habits for life.

Mrs. Jamie Brady, Principal



SCHOOL UNIFORM SHIRTS IN STOCK

As we all know, Monument maintains a school uniform policy. We are happy to say that uniform shirts are in. A letter went home on August 3rd to all families stating that all students must be in full uniform no later than August 26th. As a reminder, the policy states that all lower academy students, grades Kindergarten through fourth, will wear light blue school-issued polos. All upper academy students, grades fifth through eighth, will wear white school-issued polos. Every student will wear navy bottoms, a black belt, and black shoes with dark socks. If a jacket or sweater is to be worn, it must be navy in color with no hood. Students coming to school out of uniform after August 26th, will be receiving phone calls home. Parents will be required to bring replacement items to the school in order for the student to finish out the day. It is our desire that every student be in class every day; however, continuous violations of the school uniform policy will result in a suspension from school. Thank you for your cooperation in this matter.

UPCOMING EVENTS:

August 22nd

NWEA Testing Begins

September 5th

NO SCHOOL - Labor Day

October 7th

End of Quarter

October 10th-21st

NO SCHOOL - Fall Break

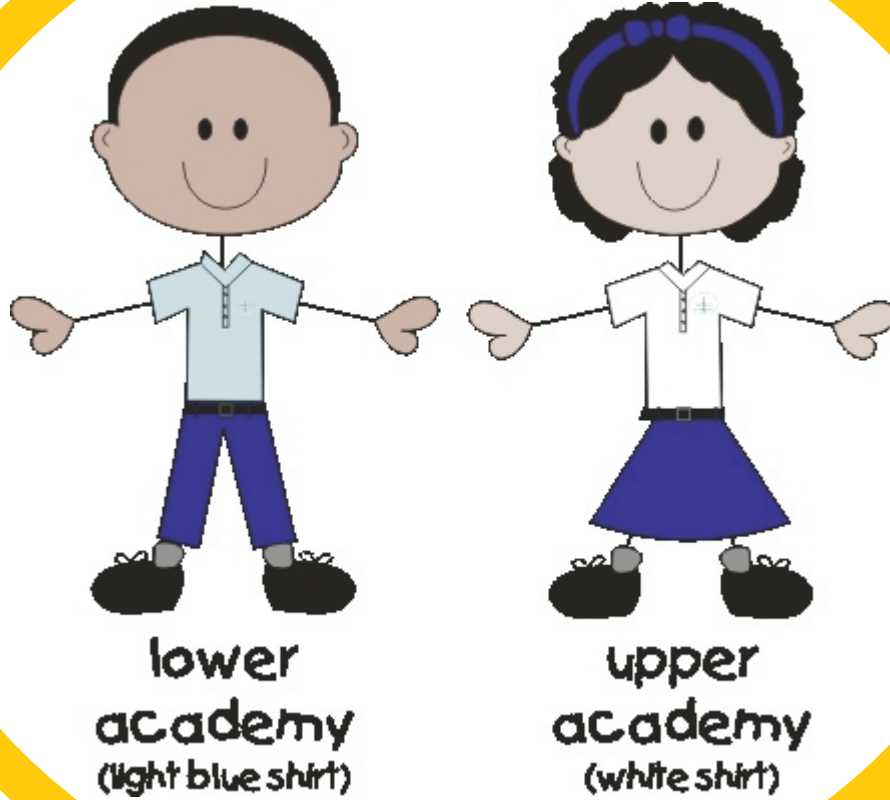


NWEA TESTING BEGINS MONDAY

Monday begins NWEA (Northwest Evaluation Association) testing for all grade levels. NWEA is a test that measures our scholars' current levels of learning. This data will be used to assess and determine goals for individual students for the year.

This test is a vital piece of information for our educators; therefore, it is essential that your student be present and on time daily. It is equally important that each scholar be well rested and have a good breakfast.

They have finally arrived...



We currently have most uniform shirt sizes and colors in stock, including sweatshirts. Stop in and get them before they run out!